

NOTES:

1) FOR OPTIMAL REINFORCEMENT PLACEMENT IN THE NUDURA FORM, SPACING OF HORIZONTAL REINFORCEMENT TO BE SPECIFIED AT 18" (457mm) O.C. AND VERTICAL REINFORCEMENT TO BE SPECIFIED AT MULTIPLES OF 8" (203mm) O.C. REFER TO NUDURA REINFORCEMENT PLACEMENT DETAILS.

2.1) FINISHED GRADE LEVEL SPECIFIED FOR FROST PRONE AREAS.

This detail is for general informational purposes only. The project design professional determines, in its sole discretion, whether this detail or a functionally equivalent detail is best suited for the project with respect to any architecture, engineering, and design requirements, including any local building code requirements. If this document is not reviewed and the product is not approved for use by a licensed design professional, the customer agrees that the detail may contain substantive flaws requiring correction, and hereby releases Tremco CPG Inc. from any and all liability related to the design and installation of the product. This detail is subject to change without notice. Contact Tremco to ensure you have the most recent version.

Combustible Construction - Floor at Grade

Detail: Nudura 10" (254mm) Form Unit, Ledger Board Connection,
Brick Veneer Finish

Drawn by: JN/NL

Checked by: KS

Scale: 1:8

Revision #: 02

Revised by: KAB

Date: 3/13/2024

File Name:

C10A03

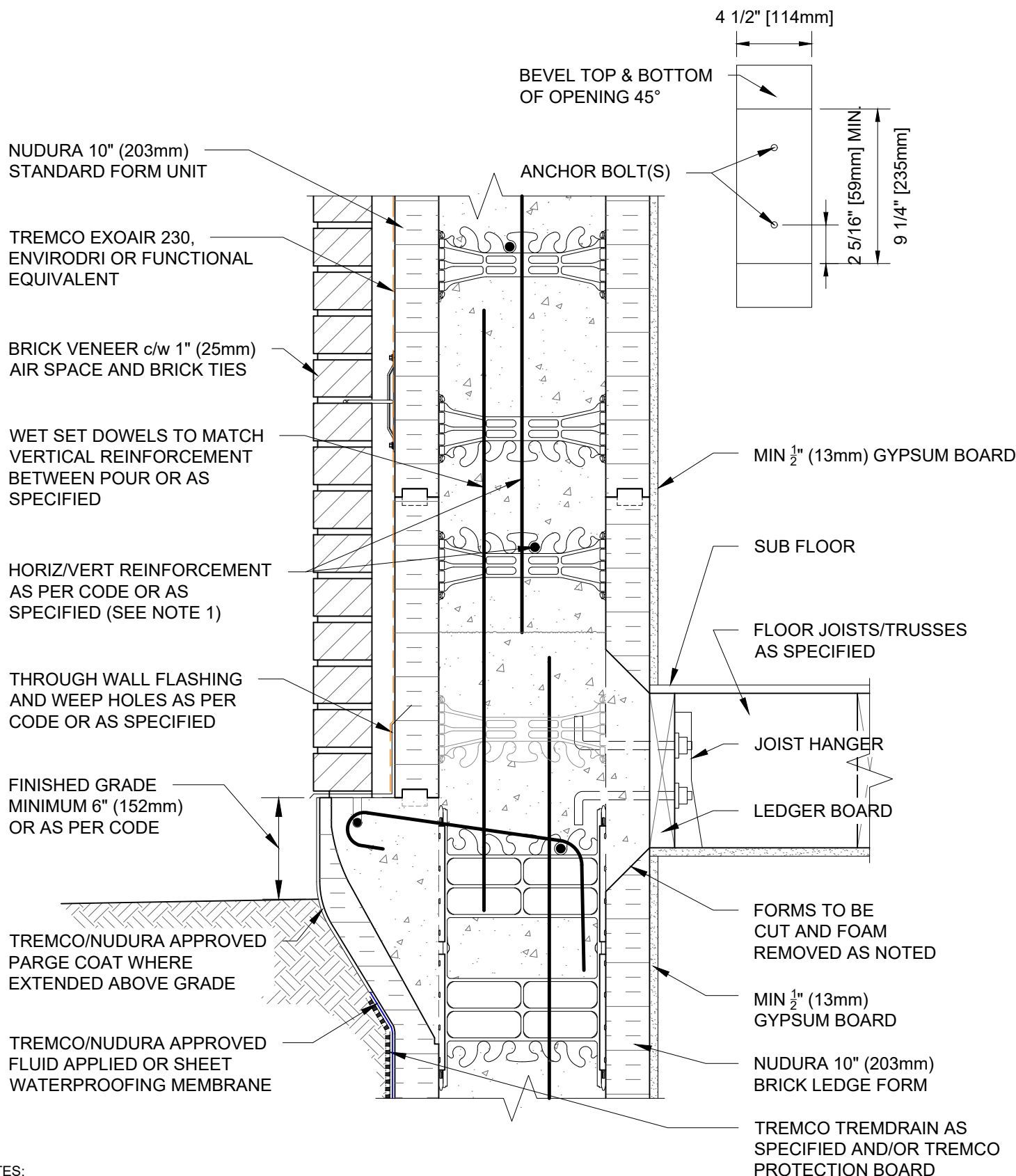


Nudura Technical Support: 866-468-6299
International: +1 705-726-9499

www.tremcocpg.com



Construction Products Group



NOTES:

1) FOR OPTIMAL REINFORCEMENT PLACEMENT IN THE NUDURA FORM, SPACING OF HORIZONTAL REINFORCEMENT TO BE SPECIFIED AT 18" (457mm) O.C. AND VERTICAL REINFORCEMENT TO BE SPECIFIED AT MULTIPLES OF 8" (203mm) O.C. REFER TO NUDURA REINFORCEMENT PLACEMENT DETAILS.

2.1) FINISHED GRADE LEVEL SPECIFIED FOR FROST PRONE AREAS.

This detail is for general informational purposes only. The project design professional determines, in its sole discretion, whether this detail or a functionally equivalent detail is best suited for the project with respect to any architecture, engineering, and design requirements, including any local building code requirements. If this document is not reviewed and the product is not approved for use by a licensed design professional, the customer agrees that the detail may contain substantive flaws requiring correction, and hereby releases Tremco CPG Inc. from any and all liability related to the design and installation of the product. This detail is subject to change without notice. Contact Tremco to ensure you have the most recent version.

Combustible Construction - Floor at Grade



Nudura Technical Support: 866-468-6299
International: +1 705-726-9499

Detail: Nudura 10" (254mm) Form Unit, Ledger Board Connection,
Brick Veneer Finish, Parallel to Wall

Drawn by: TVC

Checked by: KS

Scale: 1:8

Revision #: 02

Revised by: KAB

Date: 3/13/2024

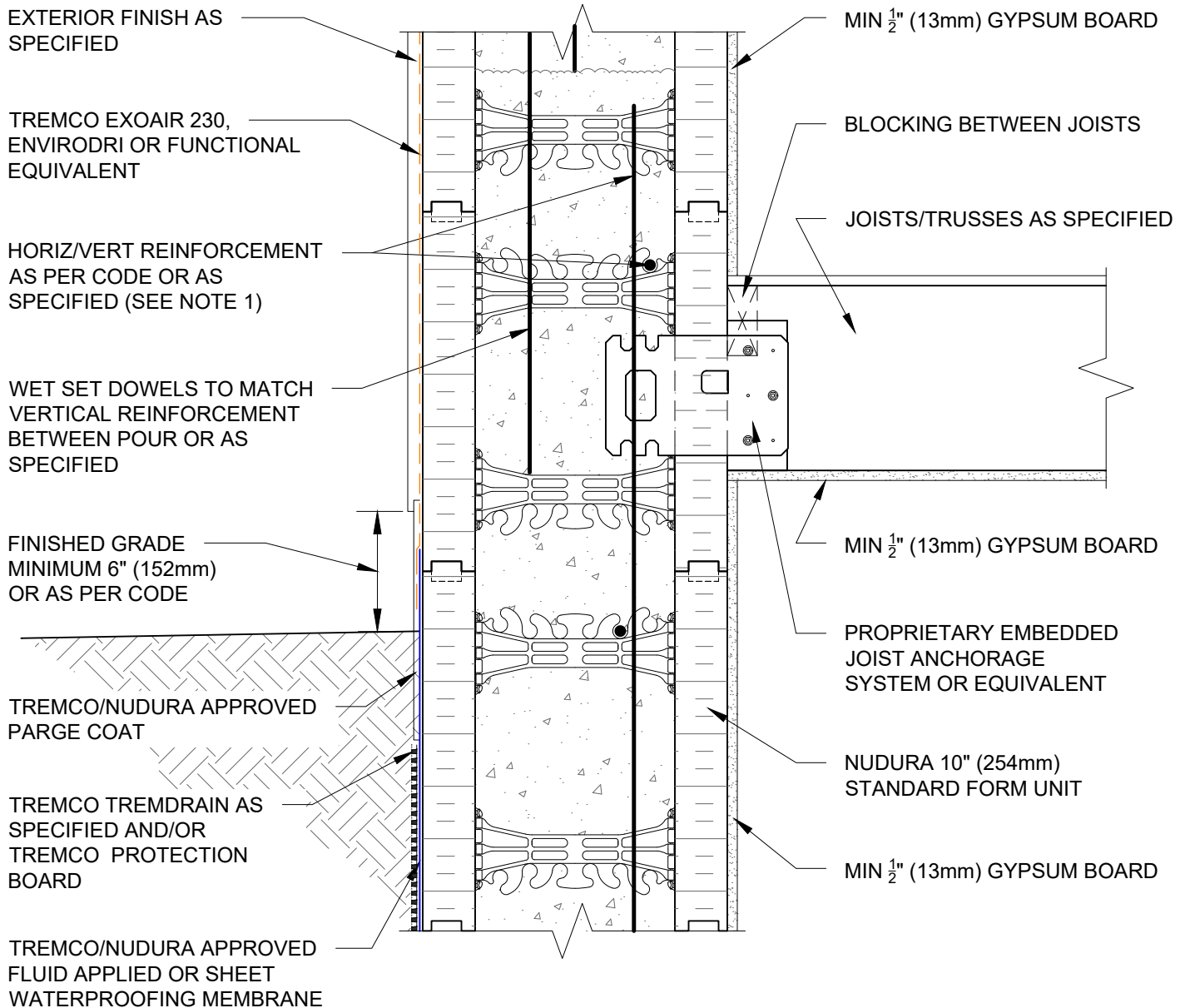
File Name:

C10A04



Construction Products Group

www.tremcocpg.com





NOTES:

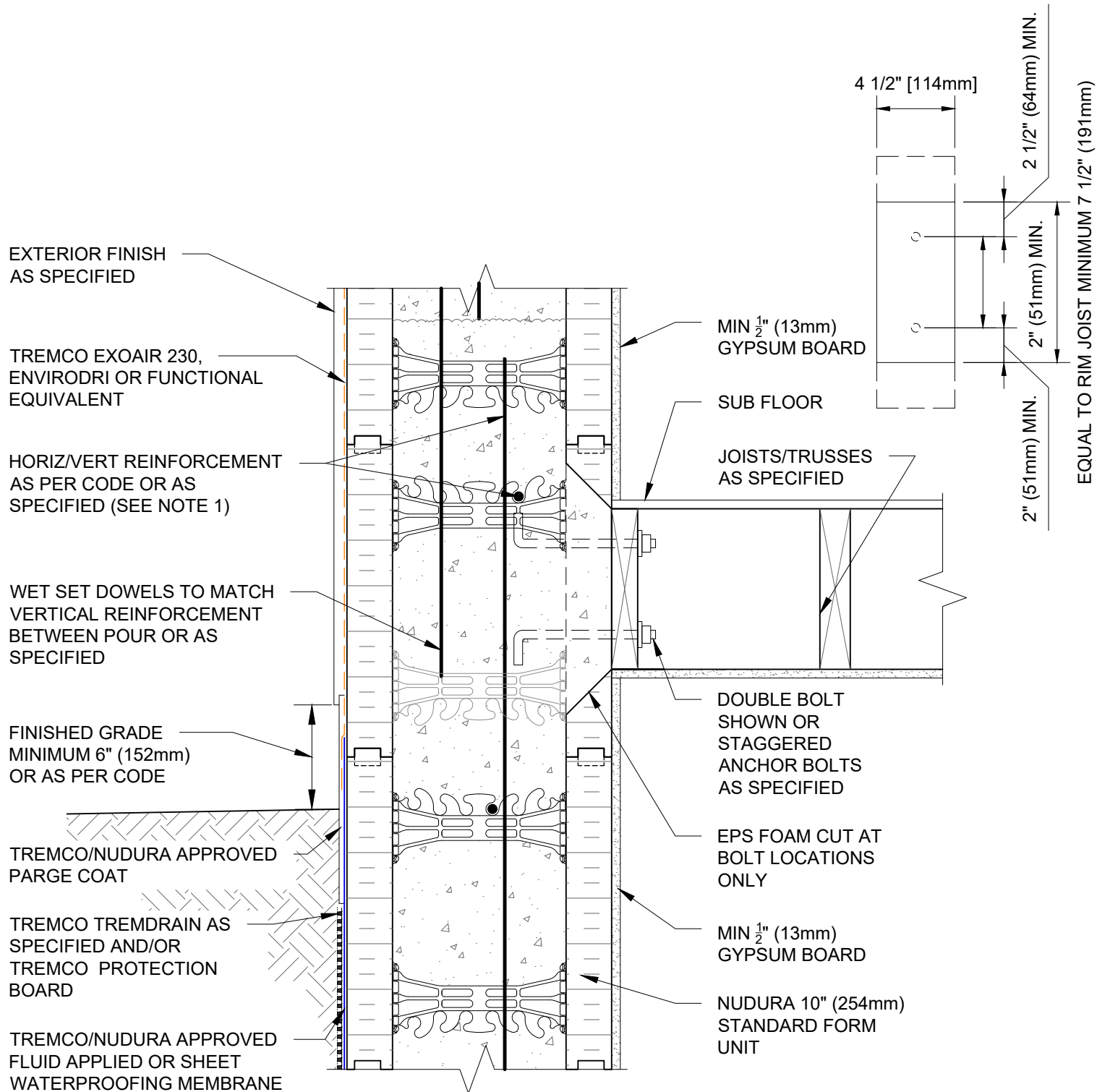
1) FOR OPTIMAL REINFORCEMENT PLACEMENT IN THE NUDURA FORM, SPACING OF HORIZONTAL REINFORCEMENT TO BE SPECIFIED AT 18" (457mm) O.C. AND VERTICAL REINFORCEMENT TO BE SPECIFIED AT MULTIPLES OF 8" (203mm) O.C. REFER TO NUDURA REINFORCEMENT PLACEMENT DETAILS.

This detail is for general informational purposes only. The project design professional determines, in its sole discretion, whether this detail or a functionally equivalent detail is best suited for the project with respect to any architecture, engineering, and design requirements, including any local building code requirements. If this document is not reviewed and the product is not approved for use by a licensed design professional, the customer agrees that the detail may contain substantive flaws requiring correction, and hereby releases Tremco CPG Inc. from any and all liability related to the design and installation of the product. This detail is subject to change without notice. Contact Tremco to ensure you have the most recent version.

Combustible Construction - Floor at Grade

 Nudura Technical Support: 866-468-6299 International: +1 705-726-9499	Detail: Nudura 10" (254mm) Form Unit, Floor Joist Connection at Grade, Multi-Purpose Hanger, Exterior Finish as Specified			File Name:
	Drawn by: TVC	Checked by: KS	Scale: 1:8	C10A05
	Revision #: 04	Revised by: KAB	Date: 3/13/2024	
	www.tremcocpg.com			


Construction Products Group



NOTES:

1) FOR OPTIMAL REINFORCEMENT PLACEMENT IN THE NUDURA FORM, SPACING OF HORIZONTAL REINFORCEMENT TO BE SPECIFIED AT 18" (457mm) O.C. AND VERTICAL REINFORCEMENT TO BE SPECIFIED AT MULTIPLES OF 8" (203mm) O.C. REFER TO NUDURA REINFORCEMENT PLACEMENT DETAILS.

2.1) FINISHED GRADE LEVEL SPECIFIED FOR FROST PRONE AREAS. FOR ALTERNATIVE GRADE LEVEL SEE DETAIL C6A30.

This detail is for general informational purposes only. The project design professional determines, in its sole discretion, whether this detail or a functionally equivalent detail is best suited for the project with respect to any architecture, engineering, and design requirements, including any local building code requirements. If this document is not reviewed and the product is not approved for use by a licensed design professional, the customer agrees that the detail may contain substantive flaws requiring correction, and hereby releases Tremco CPG Inc. from any and all liability related to the design and installation of the product. This detail is subject to change without notice. Contact Tremco to ensure you have the most recent version.

Combustible Construction - Floor at Grade

Detail: Nudura 10" (254mm) Form Unit, Floor Joist Connection at Grade, Multi-Purpose Hanger, Exterior Finish as Specified

File Name:

Drawn by: TVC

Checked by: KS

Scale: 1:8

C10A06

Revision #: 04

Revised by: KAB

Date: 3/13/2024

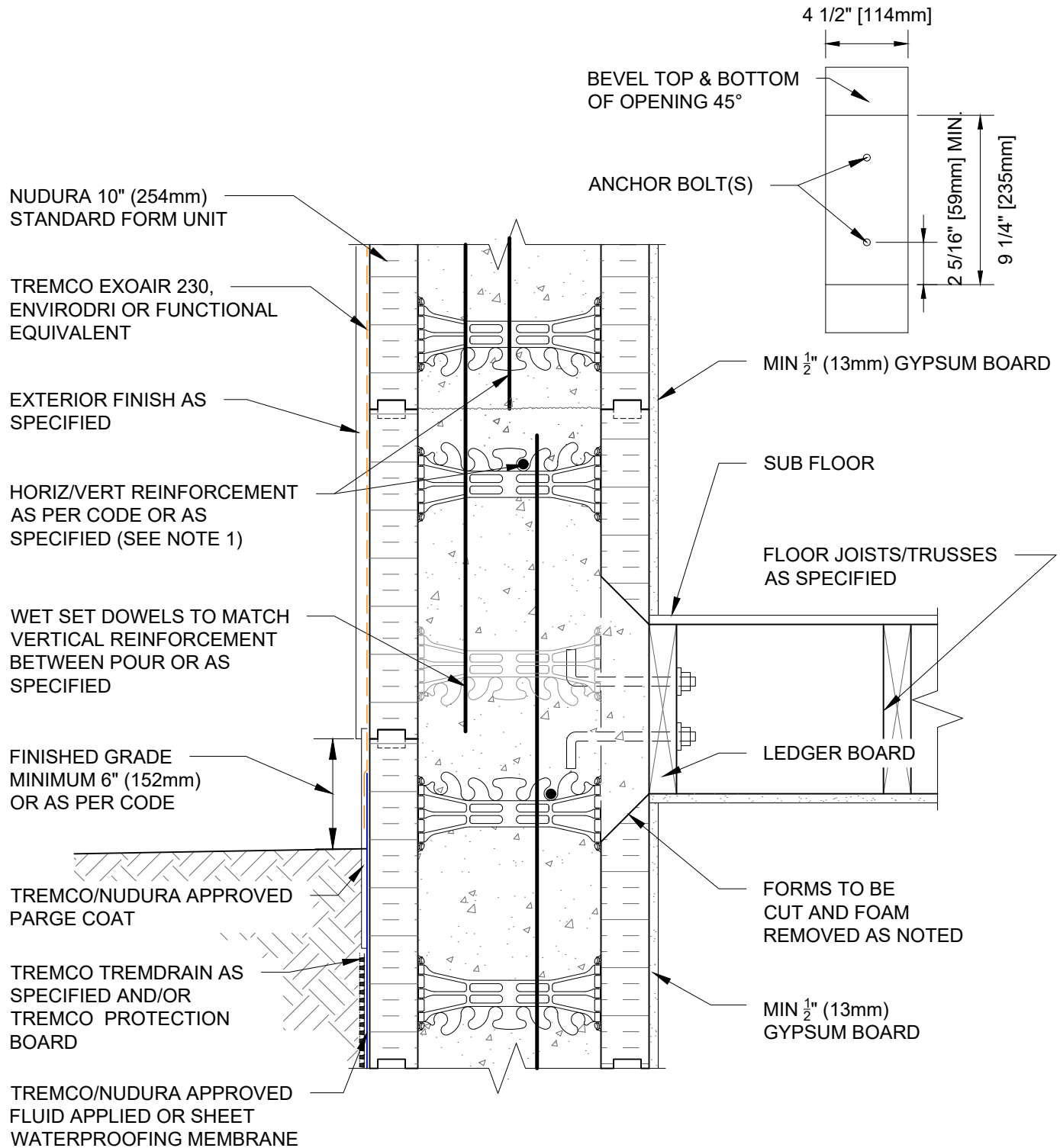


Nudura Technical Support: 866-468-6299
International: +1 705-726-9499

www.tremcocpg.com



Construction Products Group



NOTES:

1) FOR OPTIMAL REINFORCEMENT PLACEMENT IN THE NUDURA FORM, SPACING OF HORIZONTAL REINFORCEMENT TO BE SPECIFIED AT 18" (457mm) O.C. AND VERTICAL REINFORCEMENT TO BE SPECIFIED AT MULTIPLES OF 8" (203mm) O.C. REFER TO NUDURA REINFORCEMENT PLACEMENT DETAILS.

This detail is for general informational purposes only. The project design professional determines, in its sole discretion, whether this detail or a functionally equivalent detail is best suited for the project with respect to any architecture, engineering, and design requirements, including any local building code requirements. If this document is not reviewed and the product is not approved for use by a licensed design professional, the customer agrees that the detail may contain substantive flaws requiring correction, and hereby releases Tremco CPG Inc. from any and all liability related to the design and installation of the product. This detail is subject to change without notice. Contact Tremco to ensure you have the most recent version.

Combustible Construction - Floor at Grade

Detail: Nudura 10" (254mm) Form Unit, Ledger Board Detail,
Exterior Finish as Specified, Joists Parallel to Wall

File Name:

Drawn by: TVC

Checked by: KS

Scale: 1:8

C10A08

Revision #: 02

Revised by: KAB

Date: 3/13/2024

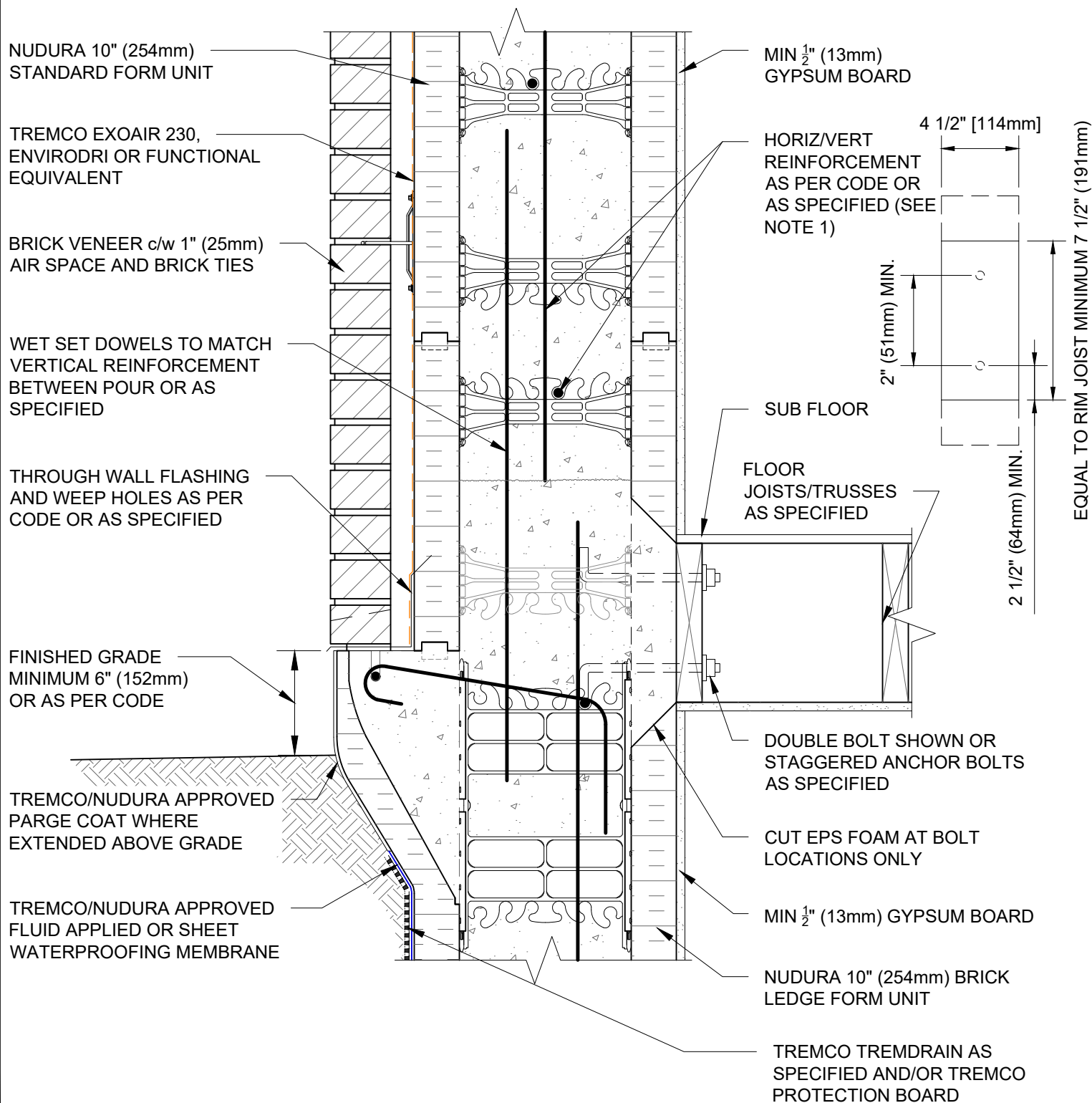


Nudura Technical Support: 866-468-6299
International: +1 705-726-9499

www.tremcocpg.com



Construction Products Group



NOTES:

1) FOR OPTIMAL REINFORCEMENT PLACEMENT IN THE NUDURA FORM, SPACING OF HORIZONTAL REINFORCEMENT TO BE SPECIFIED AT 18" (457mm) O.C. AND VERTICAL REINFORCEMENT TO BE SPECIFIED AT MULTIPLES OF 8" (203mm) O.C. REFER TO NUDURA REINFORCEMENT PLACEMENT DETAILS.

2.1) FINISHED GRADE LEVEL SPECIFIED FOR FROST PRONE AREAS.

This detail is for general informational purposes only. The project design professional determines, in its sole discretion, whether this detail or a functionally equivalent detail is best suited for the project with respect to any architecture, engineering, and design requirements, including any local building code requirements. If this document is not reviewed and the product is not approved for use by a licensed design professional, the customer agrees that the detail may contain substantive flaws requiring correction, and hereby releases Tremco CPG Inc. from any and all liability related to the design and installation of the product. This detail is subject to change without notice. Contact Tremco to ensure you have the most recent version.

Combustible Construction - Floor at Grade



Nudura Technical Support: 866-468-6299
International: +1 705-726-9499

Detail: Nudura 10" (254mm) Form Unit, Multi-Purpose Hanger,
Brick Veneer Finish

Drawn by: TVC

Checked by: KS

Scale: 1:8

Revision #: 04

Revised by: KAB

Date: 3/13/2024

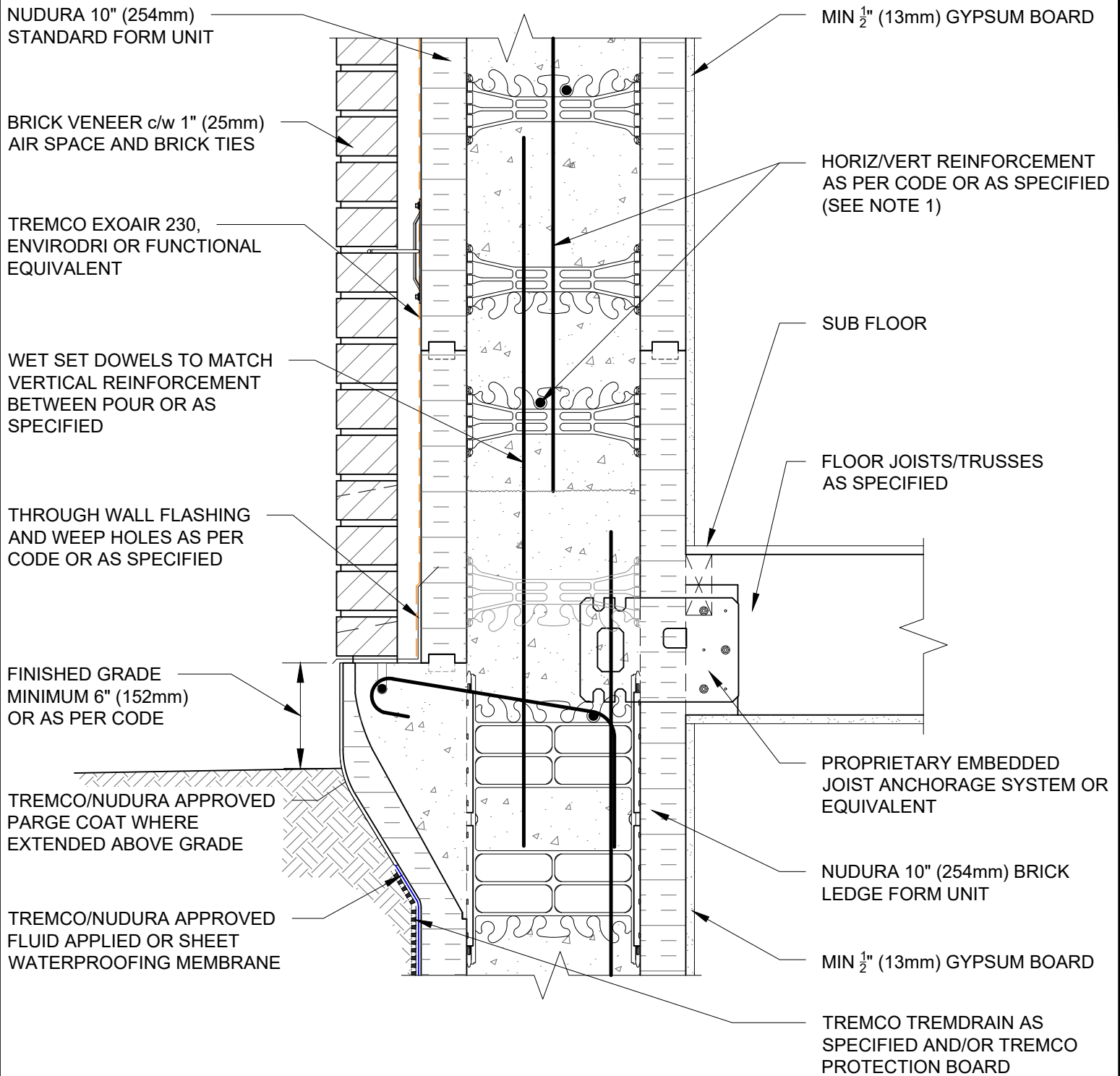
www.tremcocpg.com

File Name:

C10A09



Construction Products Group



NOTES:

1) FOR OPTIMAL REINFORCEMENT PLACEMENT IN THE NUDURA FORM, SPACING OF HORIZONTAL REINFORCEMENT TO BE SPECIFIED AT 18" (457mm) O.C. AND VERTICAL REINFORCEMENT TO BE SPECIFIED AT MULTIPLES OF 8" (203mm) O.C. REFER TO NUDURA REINFORCEMENT PLACEMENT DETAILS.

2.1) FINISHED GRADE LEVEL SPECIFIED FOR FROST PRONE AREAS.

This detail is for general informational purposes only. The project design professional determines, in its sole discretion, whether this detail or a functionally equivalent detail is best suited for the project with respect to any architecture, engineering, and design requirements, including any local building code requirements. If this document is not reviewed and the product is not approved for use by a licensed design professional, the customer agrees that the detail may contain substantive flaws requiring correction, and hereby releases Tremco CPG Inc. from any and all liability related to the design and installation of the product. This detail is subject to change without notice. Contact Tremco to ensure you have the most recent version.

Combustible Construction - Floor at Grade



Nudura Technical Support: 866-468-6299
International: +1 705-726-9499

Detail: Nudura 10" (254mm) Form Unit, Multi-Purpose Hanger,
Brick Veneer Finish

Drawn by: TVC

Checked by: KS

Scale: 1:8

Revision #: 05

Revised by: KAB

Date: 3/13/2024

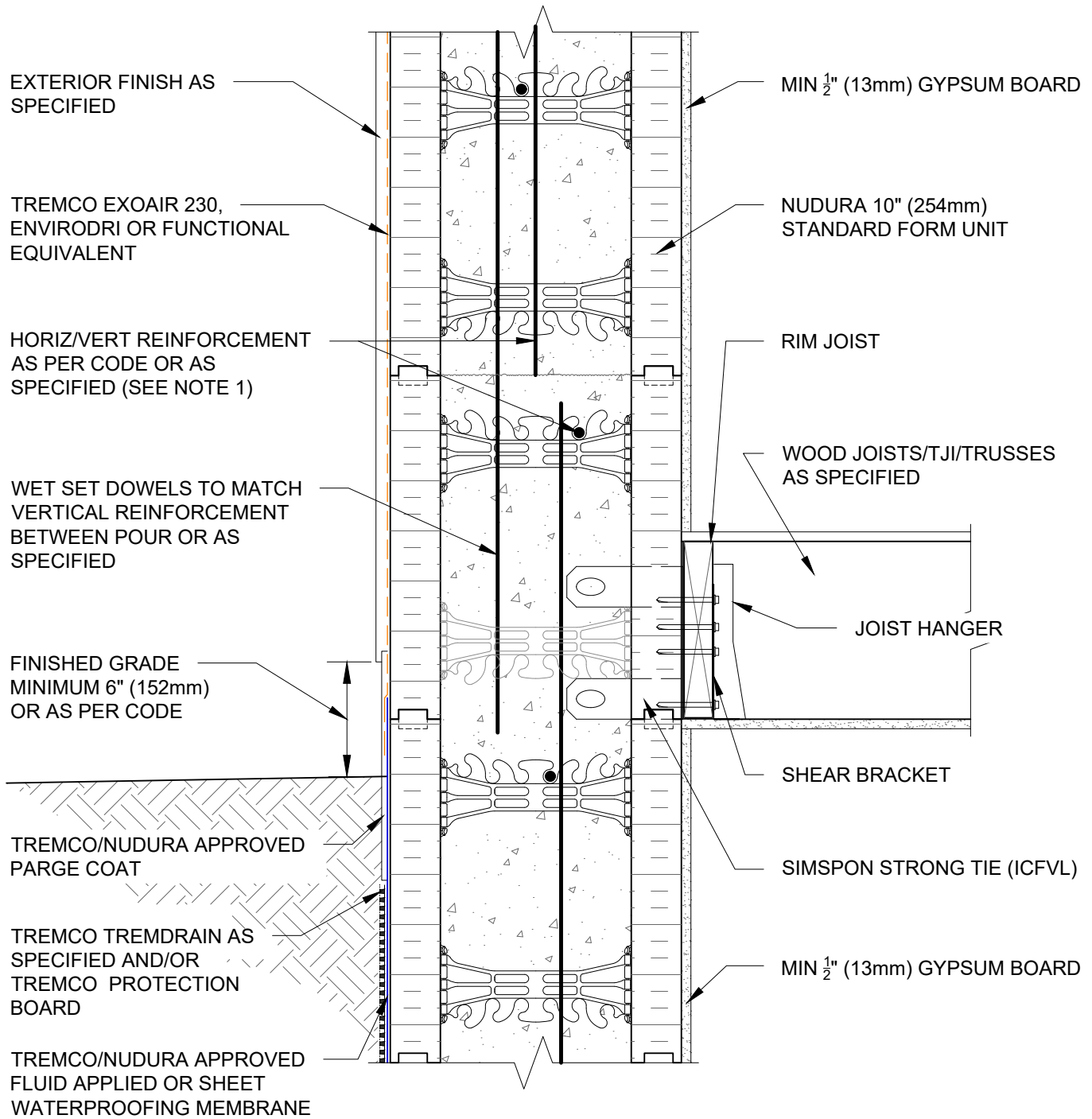
File Name:

C10A10



Construction Products Group

www.tremcocpg.com



NOTES:

1) FOR OPTIMAL REINFORCEMENT PLACEMENT IN THE NUDURA FORM, SPACING OF HORIZONTAL REINFORCEMENT TO BE SPECIFIED AT 18" (457mm) O.C. AND VERTICAL REINFORCEMENT TO BE SPECIFIED AT MULTIPLES OF 8" (203mm) O.C. REFER TO NUDURA REINFORCEMENT PLACEMENT DETAILS.

This detail is for general informational purposes only. The project design professional determines, in its sole discretion, whether this detail or a functionally equivalent detail is best suited for the project with respect to any architecture, engineering, and design requirements, including any local building code requirements. If this document is not reviewed and the product is not approved for use by a licensed design professional, the customer agrees that the detail may contain substantive flaws requiring correction, and hereby releases Tremco CPG Inc. from any and all liability related to the design and installation of the product. This detail is subject to change without notice. Contact Tremco to ensure you have the most recent version.

Combustible Construction - Floor at Grade

Detail: Nudura 10" (254mm) Form Unit, Simpson Ledger Hanger System,
Exterior Finish as Specified, Perp. to Wall, at Grade

Drawn by: TVC

Checked by: KS

Scale: 1:8

Revision #: 04

Revised by: KAB

Date: 3/13/2024

File Name:

C10A19



Nudura Technical Support: 866-468-6299
International: +1 705-726-9499

www.tremcocpg.com



Construction Products Group

BRICK VENEER c/w 1" (25mm)
AIR SPACE AND BRICK TIES

TREMCO EXOAIR 230,
ENVIRODRI OR FUNCTIONAL
EQUIVALENT

HORIZ/VERT REINFORCEMENT
AS PER CODE OR AS
SPECIFIED (SEE NOTE 1)

WET SET DOWELS TO MATCH
VERTICAL REINFORCEMENT
BETWEEN POUR OR AS
SPECIFIED

THROUGH WALL FLASHING
AND WEEP HOLES AS PER
CODE OR AS SPECIFIED

FINISHED GRADE
MINIMUM 6" (152mm)
OR AS PER CODE

TREMCO/NUDURA APPROVED
PARGE COAT WHERE
EXTENDED ABOVE GRADE

TREMCO/NUDURA APPROVED
FLUID APPLIED OR SHEET
WATERPROOFING MEMBRANE

MIN 1/2" (13mm) GYPSUM BOARD

NUDURA 10" (254mm)
STANDARD FORM UNIT

RIM JOIST

WOOD JOISTS/TJI/TRUSSES
AS SPECIFIED

JOIST HANGER

SHEAR BRACKET

SIMPSON STRONG TIE (ICFVL)

MIN 1/2" (13mm) GYPSUM BOARD

NUDURA 10" (254mm)
BRICK LEDGE FORM

TREMCO TREMDRAIN AS
SPECIFIED AND/OR TREMCO
PROTECTION BOARD

NOTES:

1) FOR OPTIMAL REINFORCEMENT PLACEMENT IN THE NUDURA FORM, SPACING OF HORIZONTAL REINFORCEMENT TO BE SPECIFIED AT 18" (457mm) O.C. AND VERTICAL REINFORCEMENT TO BE SPECIFIED AT MULTIPLES OF 8" (203mm) O.C. REFER TO NUDURA REINFORCEMENT PLACEMENT DETAILS.

2.1) FINISHED GRADE LEVEL SPECIFIED FOR FROST PRONE AREAS.

This detail is for general informational purposes only. The project design professional determines, in its sole discretion, whether this detail or a functionally equivalent detail is best suited for the project with respect to any architecture, engineering, and design requirements, including any local building code requirements. If this document is not reviewed and the product is not approved for use by a licensed design professional, the customer agrees that the detail may contain substantive flaws requiring correction, and hereby releases Tremco CPG Inc. from any and all liability related to the design and installation of the product. This detail is subject to change without notice. Contact Tremco to ensure you have the most recent version.

Combustible Construction - Floor at Grade



Nudura Technical Support: 866-468-6299
International: +1 705-726-9499

Detail: Nudura 10" (254mm) Form Unit, Simpson Ledger Hanger System,
Brick Veneer Finish

Drawn by: TVC

Checked by: KS

Scale: 1:8

Revision #: 04

Revised by: KAB

Date: 3/13/2024

www.tremcocpg.com

File Name:

C10A20



Construction Products Group

BRICK VENEER c/w 1" (25mm)
AIR SPACE AND BRICK TIES

TREMCO EXOAIR 230,
ENVIRODRI OR FUNCTIONAL
EQUIVALENT

HORIZ/VERT REINFORCEMENT
AS PER CODE OR AS
SPECIFIED (SEE NOTE 1)

WET SET DOWELS TO MATCH
VERTICAL REINFORCEMENT
BETWEEN POUR OR AS
SPECIFIED

THROUGH WALL FLASHING
AND WEEP HOLES AS PER
CODE OR AS SPECIFIED

FINISHED GRADE
MINIMUM 6" (152mm)
OR AS PER CODE

TREMCO/NUDURA APPROVED
PARGE COAT WHERE
EXTENDED ABOVE GRADE

TREMCO/NUDURA APPROVED
FLUID APPLIED OR SHEET
WATERPROOFING MEMBRANE

MIN $\frac{1}{2}$ " (13mm) GYPSUM BOARD

NUDURA 10" (254mm)
STANDARD FORM UNIT

RIM JOIST

WOOD JOISTS/TJI/TRUSSES
AS SPECIFIED

WOOD JOISTS/TJI/TRUSSES
AS SPECIFIED

SHEAR BRACKET

SIMPSON STRONG TIE (ICFVL)

MIN $\frac{1}{2}$ " (13mm) GYPSUM BOARD

NUDURA 10" (254mm)
BRICK LEDGE FORM

TREMCO TREMDRAIN AS
SPECIFIED AND/OR TREMCO
PROTECTION BOARD

NOTES:

1) FOR OPTIMAL REINFORCEMENT PLACEMENT IN THE NUDURA FORM,
SPACING OF HORIZONTAL REINFORCEMENT TO BE SPECIFIED AT 18"
(457mm) O.C. AND VERTICAL REINFORCEMENT TO BE SPECIFIED AT
MULTIPLES OF 8" (203mm) O.C. REFER TO NUDURA REINFORCEMENT
PLACEMENT DETAILS.

2.1) FINISHED GRADE LEVEL SPECIFIED FOR FROST PRONE AREAS.

This detail is for general informational purposes only. The project design professional determines, in its sole discretion, whether this detail or a functionally equivalent detail is best suited for the project with respect to any architecture, engineering, and design requirements, including any local building code requirements. If this document is not reviewed and the product is not approved for use by a licensed design professional, the customer agrees that the detail may contain substantive flaws requiring correction, and hereby releases Tremco CPG Inc. from any and all liability related to the design and installation of the product. This detail is subject to change without notice. Contact Tremco to ensure you have the most recent version.

Combustible Construction - Floor at Grade



Nudura Technical Support: 866-468-6299
International: +1 705-726-9499

Detail: Nudura 10" (254mm) Form Unit, Simpson Ledger Hanger System,
Brick Veneer Finish, Parallel to Wall

Drawn by: TVC

Checked by: KS

Scale: 1:8

Revision #: 04

Revised by: KAB

Date: 3/13/2024

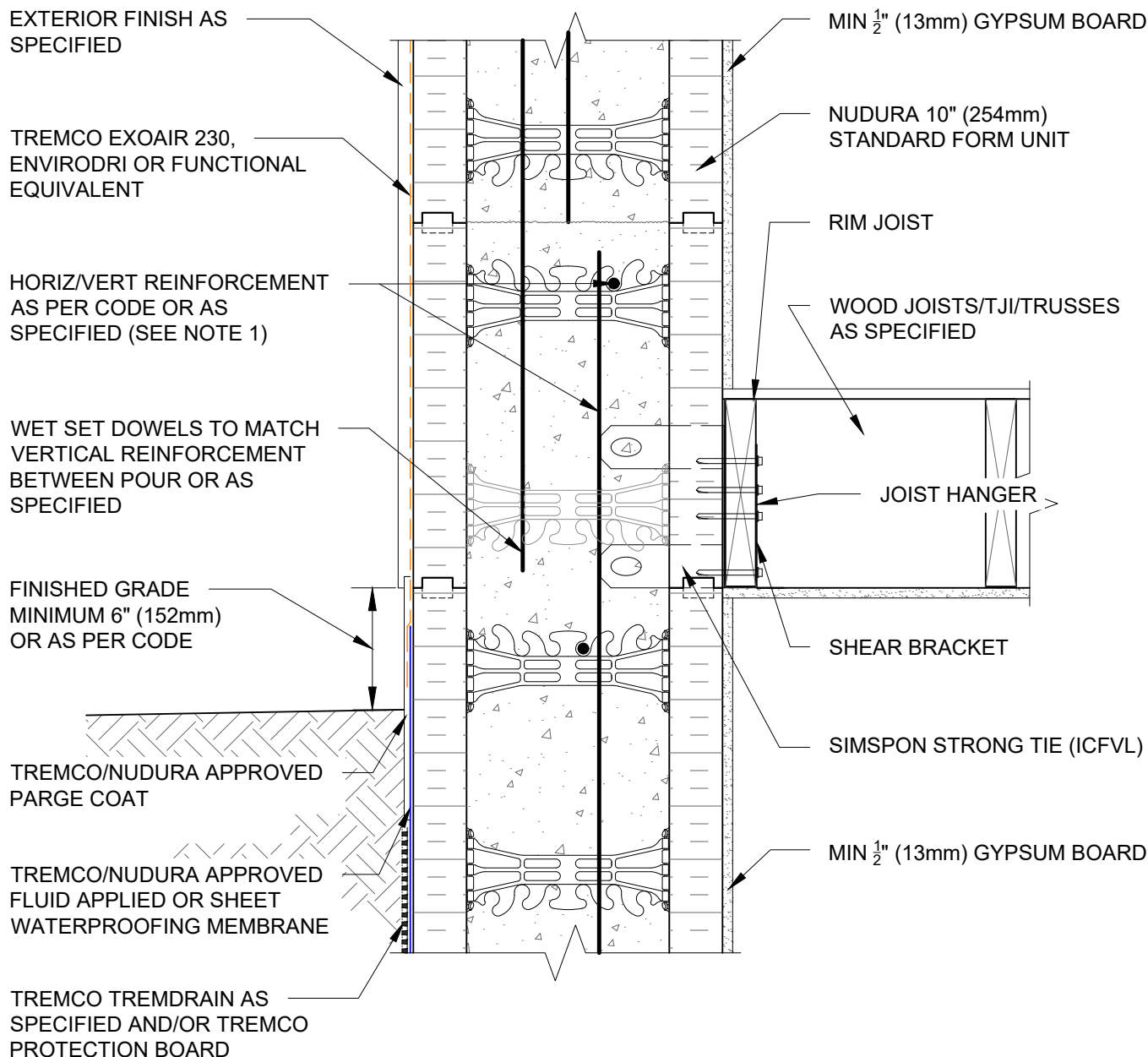
www.tremcocpg.com

File Name:

C10A21



Construction Products Group





NOTES:

1) FOR OPTIMAL REINFORCEMENT PLACEMENT IN THE NUDURA FORM, SPACING OF HORIZONTAL REINFORCEMENT TO BE SPECIFIED AT 18" (457mm) O.C. AND VERTICAL REINFORCEMENT TO BE SPECIFIED AT MULTIPLES OF 8" (203mm) O.C. REFER TO NUDURA REINFORCEMENT PLACEMENT DETAILS.

This detail is for general informational purposes only. The project design professional determines, in its sole discretion, whether this detail or a functionally equivalent detail is best suited for the project with respect to any architecture, engineering, and design requirements, including any local building code requirements. If this document is not reviewed and the product is not approved for use by a licensed design professional, the customer agrees that the detail may contain substantive flaws requiring correction, and hereby releases Tremco CPG Inc. from any and all liability related to the design and installation of the product. This detail is subject to change without notice. Contact Tremco to ensure you have the most recent version.

Combustible Construction - Floor at Grade

 Nudura Technical Support: 866-468-6299 International: +1 705-726-9499	Detail: Nudura 10" (254mm) Form Unit, Simpson Ledger Hanger System, Exterior Finish Specified, Parallel to Wall			File Name: C10A22	 Construction Products Group
	Drawn by: TVC	Checked by: KS	Scale: 1:8		
	Revision #: 04	Revised by: KAB	Date: 3/13/2024		
	www.tremcocpg.com				